



2012 Directions

Brigantine North School

301 E. Evans Blvd.
Brigantine, NJ 08203

From Absecon :

Take Rt. 30 East, The White Horse Pike, towards Atlantic City.
After the first light, stay to the left and take the Atlantic City-Brigantine Connector.
Follow signs to Brigantine.
This will take you towards the Trump Marina Casino/Hotel.
Continue straight toward Brigantine and over the Brigantine Bridge.
After you cross the Brigantine Bridge, you are on Brigantine Boulevard.
At the lighthouse circle, take the 4th exit onto Bayshore Ave.
Follow Bayshore Ave. to Lafayette Blvd./Place
Take a right onto Lafayette Blvd./Place
Follow Lafayette Place to East Evans Blvd.
School is at the intersection of Lafayette Place and East Evans Blvd.

Cooper River

Camden County Park
Cherry Hill, NJ

From Absecon:

Take the A.C. Expressway. Continue on Route 42, the North/South Freeway to I-295 NORTH (I-295 is after the Deptford Mall just before the Walt Whitman Bridge. It's a right hand exit). Follow I-295 to Exit 34-B (Cherry Hill/Route 70 West). Exit at Cuthbert Boulevard South and proceed to North Park Boulevard.

Alternate Route #1 from Absecon:

Take the Atlantic City Expressway to Route 42 North to Interstate 295 North Exit 34B (Cherry Hill/Route 70 West).
Proceed approximately 5 miles west on Route 70. You will pass Calvary Cemetery on your right. You will see Bishop Eustace Prep on your left and Goodwill be on your right. There is a jug handle that wraps around Goodwill. Follow the jug handle on your right and cross over Rt.70 and proceed into the Eustace parking lot.

Alternate Route #2 from Absecon:(Coach Baca's choice)

Take the A.C. Expressway. Continue on Route 42, the North/South Freeway. bearing to the right as you approach the Walt Whitman Bridge. Look for Route 130 North. It's a right hand exit. Follow Route 130 North. You will go through traffic lights and around one circle. After the circle, look on the right for the Cooper River Park. You will go over

a small bridge and turn right onto North Park Boulevard. You are at the start of the races and will probably see boats on the water. Continue down North Park Boulevard until you see the parking on the right.

(If you get to Kmart, you have passed the Park. Go through the Kmart parking lot, bearing to the right. You will come to North Park Boulevard. Turn left and proceed to the parking area.)

From the NJ Turnpike:

Take Exit 4 to Route 73 North heading toward Philadelphia. Take left onto Route 38 West, then exit south on Cuthbert Blvd. Just beyond exit to route 70 is North Park Boulevard and the race course.

From I-95 and Philadelphia:

Go over Ben Franklin Bridge on 676 (US 30). Continue on HWY 38 heading east for 0.6 miles. Bear right on US 70 heading east for 1.1 miles to S. Park Blvd.

*Finish line of the race course and parking area is near the corner of S. Crescent Blvd. and N. Park Blvd, just South of Rte. 70. All parking is on the North side.

Ed Rehill Boathouse in Brigantine

504 Bayshore Ave.
Brigantine, NJ 08203

From Absecon :

Take Rt. 30 East, The White Horse Pike, towards Atlantic City.

After the first light, stay to the left and take the Atlantic City-Brigantine Connector. Follow signs to Brigantine.

This will take you towards the Trump Marina Casino/Hotel.

Continue straight toward Brigantine and over the Brigantine Bridge.

After you cross the Brigantine Bridge, you are on Brigantine Boulevard.

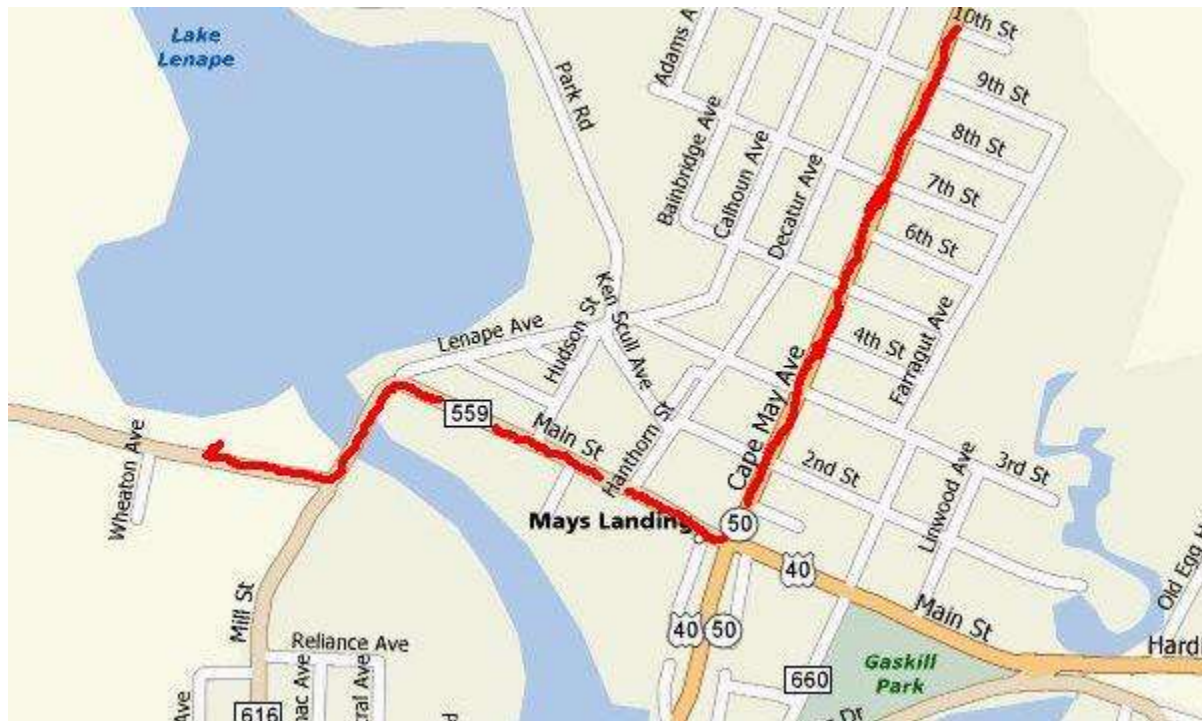
At the lighthouse circle, take the 4th exit onto Bayshore Avenue. Follow Bayshore Avenue to 5th Street. The boathouse will be on your left.

Lake Lenape – ACRA Boathouse in Mays Landing

This is where the rowers go.

From Hamilton Mall:

Take BLACK HORSE PIKE West/ US-322 W / US-40 for about 4.2 mi. Take the Rt-50 N Ramp toward Egg Harbor/Mays Landing then take the RT-50 ramp toward Mays Landing. Turn left onto NJ-50/Cape May Ave. for 1.9 miles. Turn Right onto Route 559/Main St. You will pass The Mill Street Pub and Boakes Funeral Home. Bear left onto Route 559 then take first Right onto 559 (Wheatons Glass on the corner). Road to ACRA Boathouse will be on your right.



Lake Lenape Park from ACRA Boathouse in Mays Landing

This is where the races are viewed.

At Wheatons make a Left onto Route 559 and bear Right onto Route 559/Main St. At Route 50/Cape May Ave make a Left. Take Route 50 to 13th Street. Make a Left onto 13th Street and follow Directions below **To Lake Lenape Park**.

To Lake Lenape Park:

From Route 50, turn onto 13th St. Turn left onto Adams Ave. Turn Right onto Tanglewood Rd. Follow signs to Park.



Mercer County Park

From Parkway:

- Parkway North to Exit 58 toward Trenton/Tuckerton
- Left onto 539 N for about 22 miles
- SLIGHT LEFT onto 530 W
- Stay Straight to go to 539 N for about 19 miles
- Turn left onto 526 W for about 4 miles
- Turn right onto Robbinsville Edinburg Rd / 526 W for about 3 miles
- 526 W becomes NJ-33 (continue straight)
- Turn left at Edinburg / Old Trenton Road (535) (this is a T-intersection)
- "Mercer County Park" entrance is about .2 miles on Old Trenton Road
- Follow the park road for about 1/2 mile until you see regatta venue

From North and South via U.S. 1:

- U.S. 1 to Quaker Bridge Road (overpass at Quaker Bridge Mall)
- South on Quaker Bridge Road (533)
- 2 Miles to Hughes Drive (after third traffic light)
- Left onto Hughes (Van Nest Wildlife Refuge near left corner)
- Hughes to entrance on left

From New Jersey Turnpike Exit 8:

- After toll, follow signs for 'Hightstown, Route 130'
- Follow road into Hightstown until it comes to a "T" (Fire Dept. in front of you)
- Take left at light onto Main St.
- Follow Main St. up the hill for about 1 mile (pass Home Depot on left)
- At the junction of Rt. 33 and Rt. 130 veer left at traffic light
- Follow Rt. 130 for a short time until first light
- Take right on Hankins Rd.
- Follow Hankins Rd. for about two miles
- Take left on Old Trenton Rd. (traffic light)
- Follow Old Trenton Rd (go through traffic light at Edinburgh Rd.)
- "Mercer County Park" entrance is about 1/2 mile after Edinburgh Rd.
- Follow the park road for about 1/2 mile until you see regatta venue

From North on Route 206:

- Route 206 into Princeton
- Left at traffic light by Borough Municipal Building onto Nassau Street
- Go 3 traffic lights to Washington Road
- Washington Road to U.S. Route 1 South
- Use directions for "From North and South via U.S. 1"

St. Andrew's School

350 Noxontown Rd.

Middletown, DE 19709-1605

From Absecon: Local Roads & Richman's Ice Cream -

Take Route 40 South thru Mays Landing to the Delaware Memorial Bridge.

Then follow the directions below: **From the Delaware Memorial Bridge.**

Alternate ALL Highway Route:

Take the Atlantic City Expressway. Continue onto Route 42, the North/South Freeway towards the Walt Whitman Bridge. After the Deptford Mall exit stay in

the right two lanes. You will pass the exit for 295 North, a major two lane right hand turn. Take the next exit, it is for 295 South. At the end of the exit ramp is a stop sign. Turn left. Cross the bridge and take the first right, following the signs for 295 South. This exit will put you back on the highway headed back to Atlantic City. The exit for 295 South is in the far left lane. You must bear to your left across **ALL** six lanes of traffic. Follow 295 South all the way to the Delaware Memorial Bridge. Then follow the directions below: **From The Delaware Memorial Bridge.**

From The Delaware Memorial Bridge:

Take I-95 South into Delaware. Exit at 4-A (sign to Christiana Mall) and follow signs to Route 1 South towards Dover. Stay on Route 1 South going over the bridge with the yellow arches and continue through the tollbooth (\$1.00). Remain on Route 1 South to Exit 136 (Route 299/Middletown/Odessa Exit). Take a right onto Rte. 299 towards Middletown. At the second light turn left onto Silver Lake Road and proceed until it ends at Noxontown Road. *For visiting crews and rowing spectators, turn left onto Noxontown Road and go past the main school entrance (you will see two stone pillars marking this entrance on your right) cross the bridge over Noxontown Pond and turn right into gated area (you will see the boat trailers in the field).*

Returning home: Reverse your route back to the Delaware Memorial Bridge.

For Route 40 and Richman's Ice Cream: Follow the signs for Route 40. It can be tricky as right lanes merge and then reform.

For 295 North: Follow the signs. When you get back near Philadelphia, take the second of the two left hand exits which indicates continuing onto 295 North. The road merges back onto Route 42, the North/South Freeway. Once on Route 42, the North/South Freeway, do NOT take the 295 North exit. Go to the next exit, 295 South. Turn left at the stop sign and cross the bridge. At the end of the bridge, take the right hand exit for 295 South. Once on Route 42, the North/South Freeway, go straight following the signs for Atlantic City. This will take you back to the Atlantic City Expressway.

NOTE: If you take the first left hand exit off 295 North by mistake, you end up headed for the Walt Whitman Bridge in the left hand express lanes. As you approach the Walt Whitman, bear right towards Camden/Ben Franklin Bridge. Take one of the local exits to do a U-Turn back onto Route 42, the North/South Freeway, to come home.

Schuylkill River, Phila. PA

From Absecon:

Take the Atlantic City Expressway to the Walt Whitman Bridge.

Follow the Schuylkill Expressway past Boat House Row, past the race area, past Roosevelt Avenue, all the way to the Kelly Drive Exit. It exits to the right.

At the bottom of the exit is a Stop Sign. Traffic is one-way, so turn right.

IMMEDIATELY get into the left hand lane.

Take the first left to Ridge Avenue East/Kelly Drive. This is a tight curve, so be careful!

Stay in the left lane and immediately bear left, following signs to Kelly Drive South/East River Drive. If you look at the map, you are making a big 360 degree loop to the left.

This puts you on Kelly Drive South/East River Drive which will take you directly to the race area.

From this point it is one(1) mile (past four(4) traffic lights).

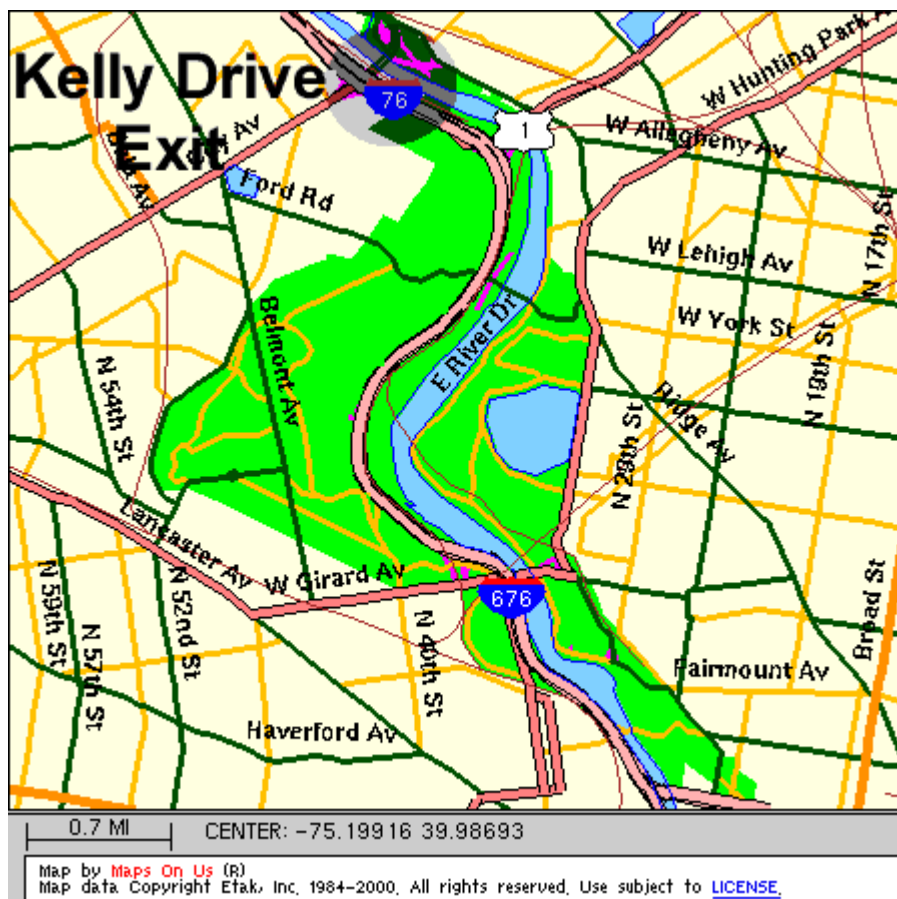
As you reach the race area, the Fairmount Park Police will have a road barrier erected. Proceed slowly.

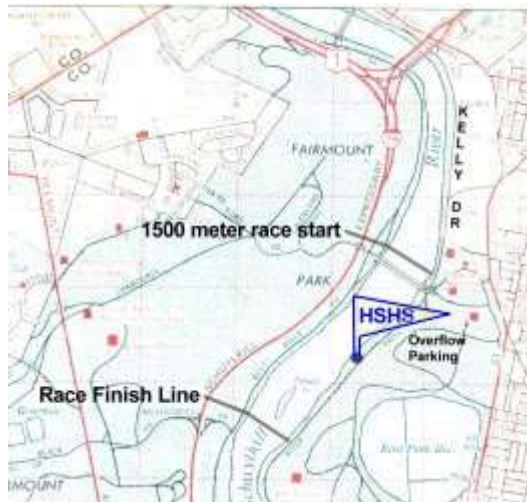
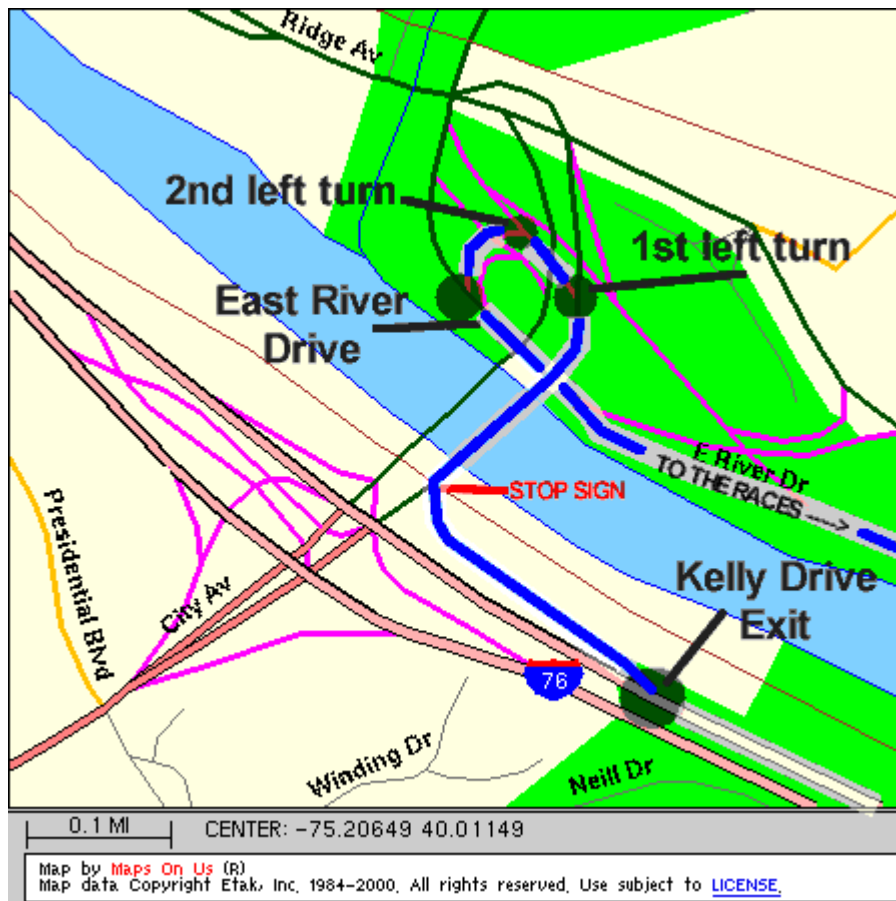
Show your Parking Pass and you can stay to the right and enter the race area.

If you do not have a parking pass, (most of you) you will be directed left and up the hill to the parking area.

Find the path and make your way down to our tent site.

Parents arriving before 6am may get through before the security barrier is setup.





The first building on your right is the Canoe Club (Bathrooms are in this building. Bring your own toilet paper.). This is where the schools park their boat trailers. Do Not Park Here. You are just past the race start line. Continue further down the middle of the race course. You will find the HSHS white tents. Angle park along here. Park as close as you can to the next car to allow for maximum parking. Do Not Park on the grass. Map of Tent location Below.



[Click on Picture for Larger Image](#)

Hey, how do I get out of here? About 20 minutes after the last race, the police will start to announce over loud speakers that all cars must leave or be moved off of Kelly Drive into one of the parking areas. Most of the the time, we can pack everything up before they start towing cars. When they do tow, they only tow to the nearest parking area. They don't tow and ticket.

When you do leave, you must go to the right, one way traffic only, towards Boathouse Row. After you pass Boathouse Row, the Art museum is on the right. Drive in front of the Art Museum and follow the circle to the left. On your right, you will see the sign for 676 and the Benjamin Franklin Bridge. Take this exit. It will put you on Vine Street to the Ben Franklin Bridge. After you cross the Ben Franklin bridge, you can bear to your right on the road that takes you back toward the Walt Whitman, then follow the North/South Freeway(Rt.42), and the Atlantic City Expressway.